

# Chemtrol™ CT3000

PROGRAMMABLE CONTROLLER

**AUTOMATED  
WATER TREATMENT**

for Cooling Towers, Boilers & Wastewater

The **CHEMTROL™ CT3000** Programmable Controllers use an advanced microprocessor-based technology that introduces a new standard of sophistication in automated water treatment. Applications include cooling towers, boilers, industrial process water, food processing, drinking water & wastewater treatment.

## KEY FEATURES

- ✓ **CONDUCTIVITY** control with choice of bleed programs
- ✓ **pH** control with automatic acid and base feed
- ✓ **ORP** control for oxidizing biocide
- ✓ **TEMPERATURE** monitoring
- ✓ **LANGELIER SATURATION INDEX** for water balance
- ✓ Make-up & Bleed **WATER FLOWMETERS**
- ✓ **ADDITIVE FEED PROGRAMS** (inhibitor, biocide, etc.)
- ✓ **FILTER CONTROL** with choice of backwash programs
- ✓ **ON-BOARD DATA LOGGING** with adjustable intervals
- ✓ **REMOTE COMPUTER OPERATION** under *Windows™*

## THE CHEMTROL™ ADVANTAGE

- ✓ 5-Year Electronic Warranty
- ✓ Large screens with easy-to-use menus and submenus
- ✓ True duplex remote operation with *Windows™* graphics display
- ✓ Dynamic probe testing with sensor failure warning
- ✓ Choice of 1, 2 or 3-point calibration for all sensors
- ✓ Multiple facilities on single phone line
- ✓ Strong dealer support program

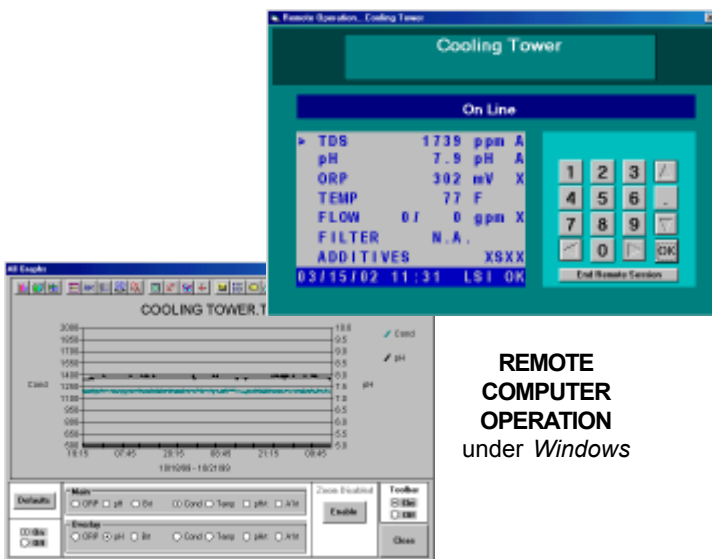


## SIMPLE AND RELIABLE

The CHEMTROL™ CT3000 controllers are easy to install and operate. All menus are displayed on a large LCD graphic display with choice of English, French or Spanish and US or metric units. Entries are made on the 16-key front panel keypad. Each unit is supplied with a complete and detailed instruction manual and a **FIVE-YEAR electronics warranty**.

## EXPERT TECHNICAL SUPPORT

Expert technical support - based on more than 30,000 installations worldwide since 1976 - is available by toll-free phone, fax or e-mail. With remote computer operation, **direct technical support** is available on-line from our Service Department or from a **CHEMTROL™** Qualified Dealer.



**REMOTE  
COMPUTER  
OPERATION**  
under *Windows*

Visit our Web Site at [www.sbcontrol.com](http://www.sbcontrol.com) or call today for a free demo CD-ROM



**SANTA BARBARA CONTROL SYSTEMS**

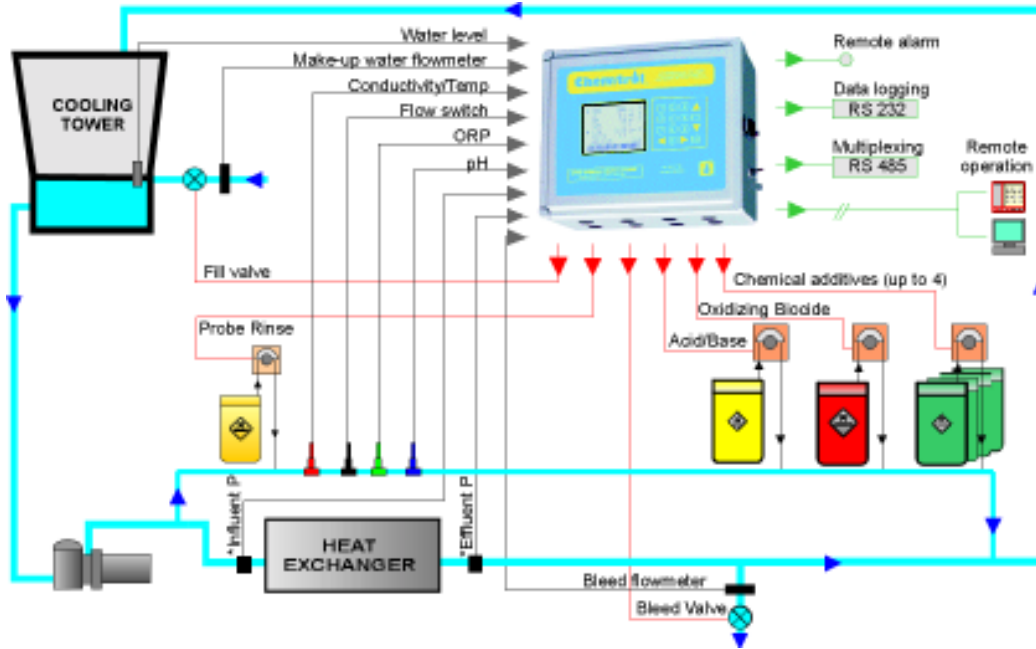
5375 Overpass Road  
Santa Barbara, CA 93111 - USA

TOLL-FREE  
PHONE  
FAX  
INTERNET

800-621-2279  
805-683-8833  
805-683-1893  
[www.sbcontrol.com](http://www.sbcontrol.com)

Leading in Automated Water Treatment Since 1976

## COOLING TOWER INSTALLATION



## SPECIFICATIONS

<b>CONDUCTIVITY / TDS</b>	0-20,000 $\mu\text{S}/\text{cm}$ or ppm Conversion factor to TDS
<b>pH</b>	0-14 Setpoint for acid and/or base feed
<b>ORP</b>	0-999 mV Programmable shock treatment
<b>TEMPERATURE</b>	0 to 140 F (-18 to 60C)
<b>SENSOR CALIBRATION</b>	1, 2 or 3 points
<b>CONTROL MODES</b>	Off, Manual, Auto, Timer Bleed-then-Feed percent of watermeter flow Daily schedule
<b>LANGELIER INDEX</b>	Water balance display Calculated from pH, Temp, Total alkalinity & calcium hardness
<b>ALARMS</b>	High/Low out-of-range Overfeed and Total run time Patented Probe Alert* Safeguard Visual, audio and external alarms
<b>DATA LOGGING</b>	On-board memory for 999 tests RS232 communication port for local download and printing
<b>NETWORKING</b>	RS485 port for multiple connections
<b>REMOTE OPERATION</b>	Data communication modem CHEMCOM™ remote software and graphical display under Windows™ Telephone voice communication
<b>WARRANTY</b>	5-year electronics 1-year sensors
<b>ELECTRICAL</b>	10 A / 110 or 230 V with selector switch All output relays 5 A
<b>MECHANICAL</b>	NEMA 4X fiberglass cabinet 13.21x11.21x6.59" (336x285x167 mm)
<b>SHIPPING</b>	19x19x11" (47x47x27cm) carton - 18 lbs (8.2 kg)

## MODEL SELECTION

### STANDARD FEATURES

- ✓ CONDUCTIVITY CONTROL
- ✓ TEMPERATURE DISPLAY
- ✓ FOUR CHEMICAL FEED PROGRAMS
- ✓ CHEMICAL LEVEL ALARM
- ✓ MAKE-UP & BLEED WATERMETER TOTALIZERS
- ✓ AUTOMATIC PROBE RINSE
- ✓ LANGELIER SATURATION INDEX
- ✓ AUTOMATIC DATA LOGGING & SERIAL DOWNLOAD
- ✓ REMOTE ALARM

### OPTIONS

- pH CONTROL
- ORP CONTROL FOR OXIDIZING BIOCIDES
- FLOW SWITCH & SENSOR LINE ASSY
- MAKE-UP WATER LEVEL CONTROL
- INFLUENT/EFFLUENT PRESSURES
- CORROSION RATE MONITORING
- REMOTE COMPUTER OPERATION
- RS485 FOR MULTIPLEXING
- TELEPHONE VOICE COMMUNICATION
- 4-20 mA OUTPUT

REPRESENTED BY: