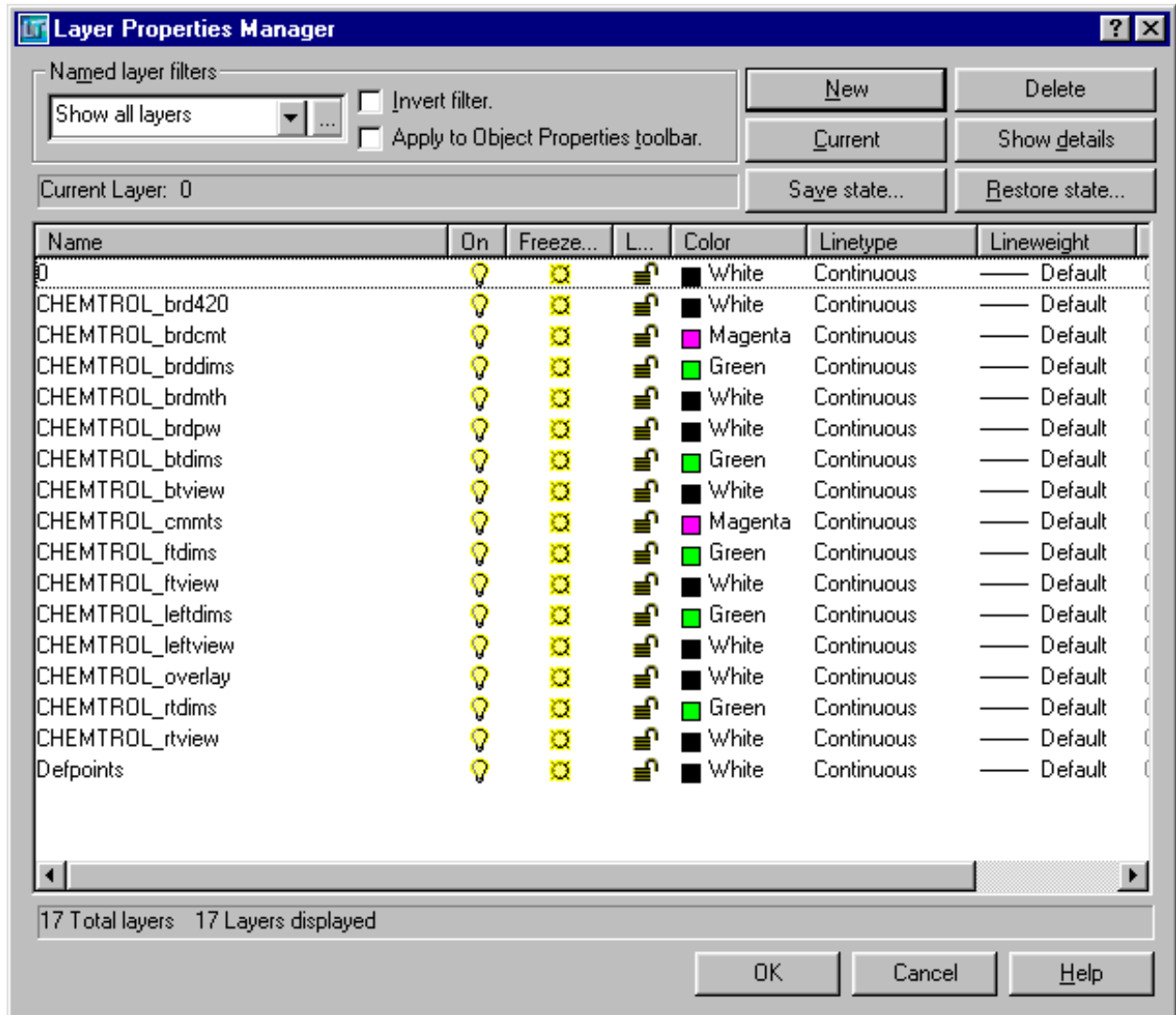


CHEMTROL CONTROLLERS

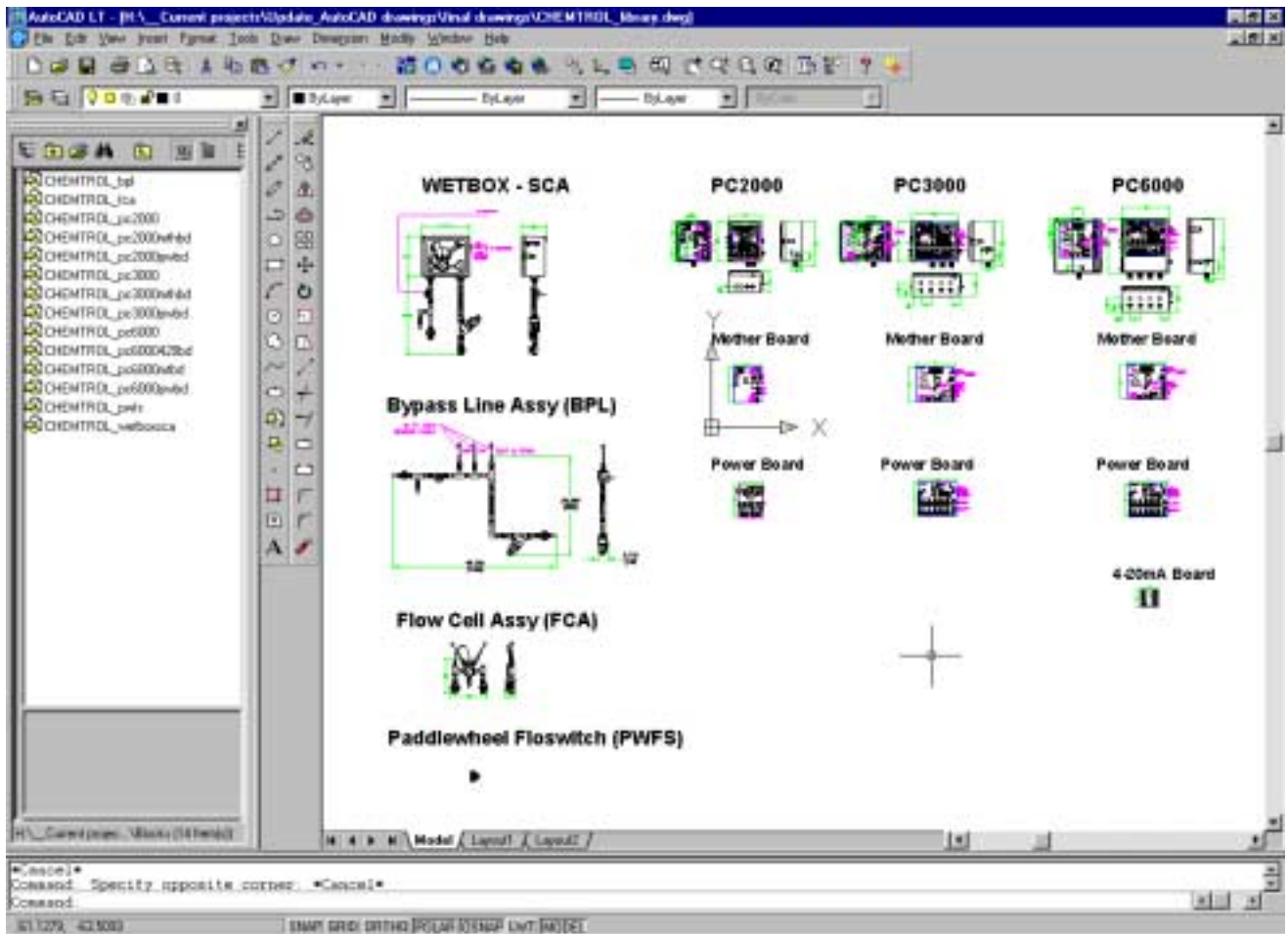
AutoCAD layer structure



- CHEMTROL_btdims = dimensions for bottom view
- CHEMTROL_btview = bottom view
- CHEMTROL_ftdims = dimensions for front view
- CHEMTROL_ftview = front view
- CHEMTROL_leftdims = dimensions for left view
- CHEMTROL_leftview = left view
- CHEMTROL_rtdims = dimensions for right view
- CHEMTROL_rtview = right view
- CHEMTROL_overlay = controller overlay on front view
- CHEMTROL_cmmts = comments about sensor connections on flow lines
- CHEMTROL_brddims = dimensions on electronic boards (motherboard, powerboard, and 4-20ma board)
- CHEMTROL_brdcmt = comments for electronic boards
- CHEMTROL_brdmth = motherboard (by itself in its own block or inside open controller door in controller blocks)
- CHEMTROL_brdpw = powerboard (by itself in its own block or inside controller enclosure in controller blocks)
- CHEMTROL_brd420 = 4-20mA daughter board (by itself in its own block)

CHEMTROL CONTROLLERS

AutoCAD library structure & content



CONTROLLERS

- CHEMTROL_pc6000 = PC6000 Controller
- CHEMTROL_pc3000 = PC3000 Controller
- CHEMTROL_pc2000 = PC2000 Controller

- CHEMTROL_pc6000mthbd = PC6000 controller motherboard (sensor input board)
- CHEMTROL_pc3000mthbd = PC3000 controller motherboard (sensor input board)
- CHEMTROL_pc2000mthbd = PC2000 controller motherboard (sensor input board)

- CHEMTROL_pc6000pwbd = PC6000 controller powerboard (power in and control outputs board)
- CHEMTROL_pc3000pwbd = PC3000 controller powerboard (power in and control outputs board)
- CHEMTROL_pc2000pwbd = PC2000 controller powerboard (power in and control outputs board)
- CHEMTROL_pc6000420bd = 4-20mA signal output board for PC6000 and PC3000 controllers

FLOW LINE ASSEMBLIES AND PARTS

- CHEMTROL_wetboxsca = sensor cell assembly (also called wetbox)
- CHEMTROL_bpl = bypass line assy
- CHEMTROL_fca = flow cell assembly
- CHEMTROL_pwfs = paddlewheel flowswitch